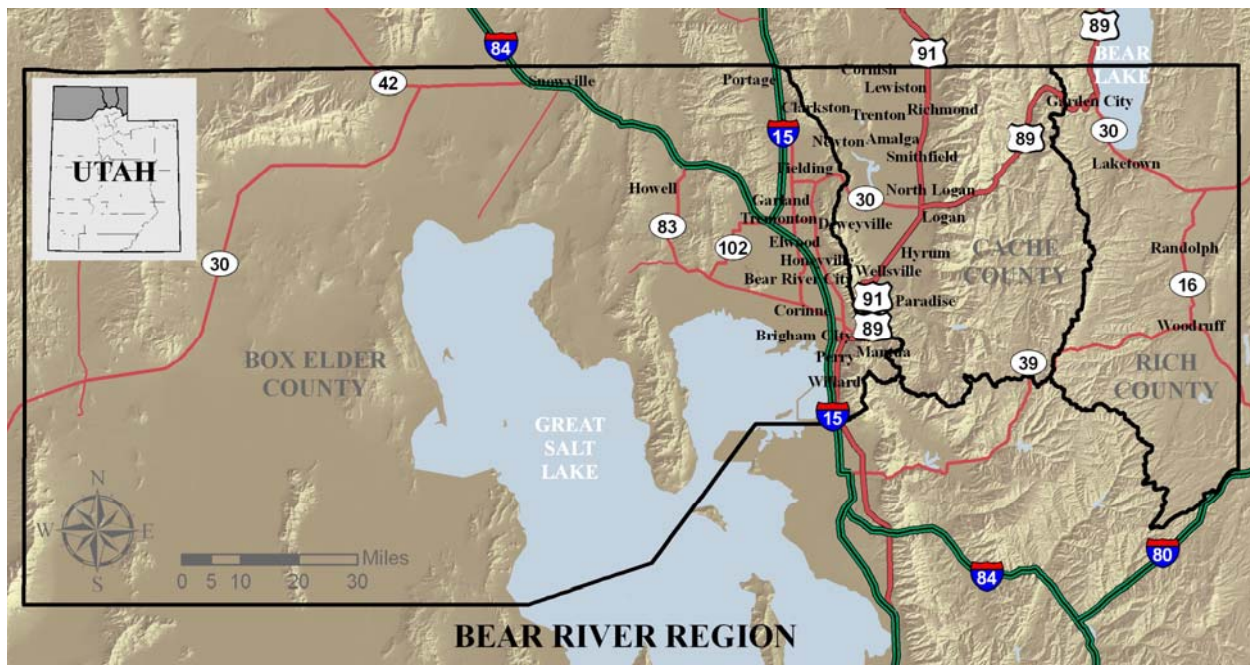


**SECTION 3:**  
**GENERAL REGIONAL DATA**

## PHYSIOGRAPHIC BACKGROUND

Bear River Association of Governments serves Utah's three most northern counties of Box Elder, Cache and Rich. The region is spread over 7,900 square miles and borders three states; Nevada, Idaho, and Wyoming. There are several important regional connections between Cache and Rich Counties and the bordering Idaho counties (Franklin and Bear Lake) to the north. Shared geographic, geological, natural, and social-cultural connections are important when considering natural hazards, pre-disaster mitigation, and emergency response and communications planning. Efforts should be coordinated between counties as much as possible to protect the public.



Box Elder County comprises 5,594 square miles and is bordered on the east by the Wellsville Mountains, Cache County, and Weber County. The Great Salt Lake and the salt flats can be found bordering the south end of the county; Nevada is to the west, and Idaho to the North. Several small ranching communities also occupy this county. The western geography is mainly rolling ranch land and small rural communities, while the eastern side connects to the populated Wasatch Front. The largest fresh water feature is the Bear River that flows from Cache County, out of Cutler Dam, and eventually deposits its waters into the Great Salt Lake.

Cache County covers approximately 1,174 square miles and is bordered by the Wellsville Mountains on the west and the Bear River Range on the east. The northern edge connects to Franklin County, Idaho, and both counties are traditionally termed "Cache Valley." Prominent streams include the Little Bear, Blacksmith Fork, and the Logan Rivers to the south, and the Bear and Cub Rivers in the north. Porcupine, Cutler, Newton and Hyrum Reservoirs are all irrigation-based reservoirs in the county. The "bench" is an elongated plateau that surrounds the valley; formed by fluctuating shorelines of ancient Lake Bonneville.

Rich County comprises 1,022 square miles and is bordered on the west and south by the Bear River and Monte Cristo Ranges and on the east by the rolling desert highlands of southwestern Wyoming. To the north are the uplands and the mountain ranges of southeastern Idaho. Bear Lake is the largest water body in the county that extends 20 miles in length and 8 miles in width. Forty-four percent of Rich County is administered by federal and state agencies.

## DEMOGRAPHICS

The total population for the Bear River Region (Box Elder, Cache, and Rich Counties combined) grew over 16% from the year 2000 to 2007 (U.S. Census Bureau Estimates, Table 2, 2008).

Box Elder County had an estimated growth rate of 11.9% for the period of 2000 to 2007 (5,101 people added for a total of 47,846 people). Perry City grew at a rate of 54%, adding 1,329 people to the county’s population, which was the largest amount of growth in the county. Elwood Town grew at a 21% rate, while Deweyville Town grew at 18%. All other towns grew at under 15%. Brigham City grew by 1,068 people (18,544 total), and Tremonton City grew by 803 (6,470 total) (U.S. Census Bureau, Tables 2 and 4, 2008).

Brigham City, Perry City, and Willard City are all communities that may continue to experience high future growth rates, due to their proximity to Weber County. This portion of the Wasatch Front affords views of the Great Salt Lake, prominent mountain ranges, and parallels Interstate 15. As development from North Ogden and Pleasant View continues to move to the north, southern Box Elder County communities will most likely afford housing for those who work along the Wasatch Front.

**Table 3-1: Annual Estimates of the Population for Incorporated Places in Box Elder County, Utah: April 1, 2000 to July 1, 2007**

Population Estimates										
Geographic Area	7/1/2007	7/1/2006	7/1/2005	7/1/2004	7/1/2003	7/1/2002	7/1/2001	7/1/2000	00-'07 Population Growth	00-'07 Percent Growth
Perry	3,748	3,350	3,027	2,878	2,853	2,759	2,585	2,419	1,329	54.90%
Elwood	828	789	745	710	680	681	676	680	148	21.80%
Deweyville	330	327	316	306	305	299	288	279	51	18.30%
Tremonton	6,470	6,184	6,176	6,125	6,097	6,025	5,898	5,667	803	14.20%
Plymouth	364	366	370	370	379	360	342	330	34	10.30%
Honeyville	1,319	1,294	1,278	1,257	1,281	1,271	1,221	1,213	106	8.70%
Brigham City	18,544	18,463	18,356	18,279	17,960	17,775	17,635	17,476	1,068	6.10%

Bear River	790	788	786	785	795	782	765	751	39	5.20%
Willard	1,693	1,646	1,633	1,628	1,656	1,648	1,623	1,625	68	4.20%
Portage	265	266	271	269	270	261	255	256	9	3.50%
Corinne	645	629	636	637	652	653	640	624	21	3.40%
Howell	229	225	229	230	239	233	226	222	7	3.20%
Garland	1,985	1,961	1,947	1,958	1,972	1,979	1,959	1,942	43	2.20%
Mantua	756	756	768	776	801	807	798	791	-35	-4.40%
Fielding	422	423	431	437	450	452	448	447	-25	-5.60%
Snowville	164	164	167	169	175	177	176	176	-12	-6.80%

Data Adapted From the Following:

**Table 4: Annual Estimates of the Population for Incorporated Places in Utah, Listed Alphabetically: April 1, 2000 to July 1, 2007 (SUB-EST2007-04-49)**

**Source: Population Division, U.S. Census Bureau**

**Release Date: July 10, 2008**

Note: The April 1, 2000 estimates base reflects changes to the Census 2000 population resulting from legal boundary updates as of January 1 of the estimates year, other geographic program changes, and Count Question Resolution actions. All geographic boundaries for the July 1, 2007 population estimates series are defined as of January 1, 2007. An "(X)" in the Census 2000 field indicates a locality that was formed or incorporated after Census 2000 or was erroneously omitted from Census 2000. Additional information on these localities can be found in the Geographic Change Notes (see "Boundary Changes" under the Geographic Topics section of the Estimates page).

Cache County grew the most out of the three counties at an estimated rate of 19.1% from 2000 to 2007 (17,496 people added for a total of 108,887 people). Astonishingly, Nibley City had a 97% growth in the same period, which was the highest growth percentage in the region. Providence City grew at a rate of 43%, while Mendon City and North Logan City grew at about 30%. Logan City, the largest in the region grew at only 12%, but added 5,265 people to the population, by far the largest contributor to the counties growing population (U.S. Census Bureau Estimates, Tables 2 and 4, 2008). All other municipalities in the region grew at a rate of under 30%. One other factor to consider regarding population growth in Cache County is the presence of Utah State University, which currently has an enrollment of 15,099 part and full-time students attending on the Logan campus (USU, 2008). Many of these students are not technically considered residents of Cache County or Logan City, since tax and other information most likely remains in their home town.

Cache County is also the only county in the Bear River Region with a Metropolitan Planning Organization (MPO). These MPO's are required for any metropolitan area with more than 50,000 people, in order for jurisdictions to be eligible for federal assistance. The CMPO is responsible for transportation planning in the communities of Smithfield, Hyde Park, North

Logan, Logan, River Heights, Providence, Millville, and parts of Nibley and the unincorporated areas of the county (CMPO Website, 2005).

<b>Table 3-2: Annual Estimates of the Population for Incorporated Places in Cache County, Utah: April 1, 2000 to July 1, 2007</b>										
<b>Population Estimates</b>										
<b>Geographic Area</b>	<b>7/1/2007</b>	<b>7/1/2006</b>	<b>7/1/2005</b>	<b>7/1/2004</b>	<b>7/1/2003</b>	<b>7/1/2002</b>	<b>7/1/2001</b>	<b>7/1/2000</b>	<b>'00-'07 Population Growth</b>	<b>'00-'07 Percent Growth</b>
Nibley	4,086	3,773	3,354	2,853	2,441	2,258	2,153	2,067	2,019	97.70%
Providence	6,345	6,076	5,918	5,421	5,090	4,811	4,538	4,420	1,925	43.60%
Mendon	1,179	1,175	1,118	1,075	1,042	974	928	904	275	30.40%
North Logan	8,149	7,545	7,444	6,996	6,890	6,791	6,698	6,271	1,878	29.90%
Hyde Park	3,738	3,579	3,415	3,265	3,123	3,053	2,998	2,967	771	26.00%
Smithfield	9,181	8,774	8,534	8,204	7,949	7,691	7,475	7,304	1,877	25.70%
Hyrum	7,551	7,471	7,312	7,194	6,976	6,810	6,666	6,336	1,215	19.20%
Millville	1,805	1,786	1,730	1,693	1,619	1,578	1,553	1,518	287	18.90%
Paradise	890	881	852	833	814	799	784	764	126	16.50%
Wellsville	3,221	3,187	3,116	3,063	2,977	2,911	2,850	2,775	446	16.10%
Richmond	2,337	2,312	2,253	2,212	2,173	2,141	2,110	2,063	274	13.30%
River Heights	1,688	1,670	1,628	1,598	1,569	1,545	1,523	1,490	198	13.30%
Newton	791	793	775	758	745	729	716	702	89	12.70%
Logan	47,965	47,359	47,074	45,795	44,994	44,701	43,074	42,700	5,265	12.30%
Trenton	502	495	487	479	472	467	461	451	51	11.30%
Amalga	474	468	460	453	447	442	437	429	45	10.50%
Clarkston	745	737	728	720	713	707	702	691	54	7.80%
Cornish	280	276	274	271	268	266	264	260	20	7.70%

Lewiston	2,014	1,999	1,981	1,963	1,942	1,937	1,912	1,884	130	6.90%
----------	-------	-------	-------	-------	-------	-------	-------	-------	-----	-------

Data Adapted From the Following:

**Table 4: Annual Estimates of the Population for Incorporated Places in Utah, Listed Alphabetically: April 1, 2000 to July 1, 2007 (SUB-EST2007-04-49)**

Source: Population Division, U.S. Census Bureau

Release Date: July 10, 2008

Note: The April 1, 2000 estimates base reflects changes to the Census 2000 population resulting from legal boundary updates as of January 1 of the estimates year, other geographic program changes, and Count Question Resolution actions. All geographic boundaries for the July 1, 2007 population estimates series are defined as of January 1, 2007. An "(X)" in the Census 2000 field indicates a locality that was formed or incorporated after Census 2000 or was erroneously omitted from Census 2000. Additional information on these localities can be found in the Geographic Change Notes (see "Boundary Changes" under the Geographic Topics section of the Estimates page).

Rich County had an estimated growth rate of 6.8% from 2000 to 2007, adding 133 residents. Considering the amount of second homes that came to the county during that time, this number seems low. Rich County is home to Bear Lake, a large freshwater body which attracts visitors and cabin/second home development along the western edge of the lake. Garden City had the most growth at 16%, adding 59 people, while Woodruff, Randolph, and Laketown were reported as having slight population loss (U.S. Census Bureau, Tables 2 and 4, 2008).

Considerations for Rich County population growth in the future should include the impact of cabin and second home development, and the possibility of homes becoming permanent residences. The U.S. Census Bureau requires 9 months of residency for people to be considered residents of a jurisdiction. Many of the homes in the Bear Lake area are only used for weeks or several months in the summer. However, infrastructure needs and services are still required by the municipalities or by the county for these residences.

<b>Table 3-3: Annual Estimates of the Population for Incorporated Places in Rich County, Utah: April 1, 2000 to July 1, 2007</b>										
<b>Population Estimates</b>										
<b>Geographic Area</b>	<b>7/1/2007</b>	<b>7/1/2006</b>	<b>7/1/2005</b>	<b>7/1/2004</b>	<b>7/1/2003</b>	<b>7/1/2002</b>	<b>7/1/2001</b>	<b>7/1/2000</b>	<b>00-'07 Population Growth</b>	<b>00-'07 Percent Growth</b>
Garden City	414	389	384	381	378	359	353	355	59	16.60%
Woodruff	190	184	187	189	191	186	187	194	-4	-2.10%
Randolph	470	457	464	470	475	462	465	482	-12	-2.50%
Laketown	183	178	181	183	185	180	181	188	-5	-2.70%

Data Adapted From the Following:

**Table 4: Annual Estimates of the Population for Incorporated Places in Utah, Listed Alphabetically: April 1, 2000 to July 1, 2007 (SUB-EST2007-04-49)**

Source: Population Division, U.S. Census Bureau

Release Date: July 10, 2008

Note: The April 1, 2000 estimates base reflects changes to the Census 2000 population resulting from legal boundary updates as of January 1 of the estimates year, other geographic program changes, and Count Question Resolution actions. All geographic boundaries for the July 1, 2007 population estimates series are defined as of January 1, 2007. An "(X)" in the Census 2000 field indicates a locality that was formed or incorporated after Census 2000 or was erroneously omitted from Census 2000. Additional information on these localities can be found in the Geographic Change Notes (see "Boundary Changes" under the Geographic Topics section of the Estimates page).

<b>Table 3-4: Current and Projected Population Estimates</b>		
<b>County</b>	<b>2008 Population Estimate</b>	<b>2040 Projected Population Estimate</b>
Box Elder County	48,712	84,034
Cache County	111,841	223,442
Rich County	2,278	3,040

2008 Population Estimate From the Utah Population Estimates Committee (UPEC), 2008.

2040 Projected Population Estimates From the Governor's Office of Planning and Budget (GOPB) Demographic and Economic Analysis Section (DEA), 2008.

## **COMMUNITY AND ECONOMIC DEVELOPMENT PROFILE**

Box Elder County experienced fairly positive economic growth in the 2000's. According to the Department of Workforce Services, 2007 ended well with job growth at 6.9%. Unemployment was at 2.9% at the end of 2007, with new jobs totaling over 1,300. Almost 40% of all non-farm employment in the county is from manufacturing (BRAG CEDS, 2008).

Box Elder County per capita personal income in 2005 was \$23,289, compared to the national per capita personal income for the same year of \$34,471 (BRAG CEDS, 2008). Residents below poverty line accounted for 7.10% of the population in the county in 2000 (U.S. Census, 2000). In 2006, unemployment in the county was only 3.2%, compared with the national unemployment rate of 4.6 in the same year (BRAG CEDS, 2008; U.S. Bureau of Labor Statistics, 2008).

Most of the residential development in Box Elder County, as outlined in the demographic profile of this document, occurred in Perry, Brigham City, and Tremonton. All other communities experienced growth except for Mantua, Fielding, and Snowville. In the unincorporated areas of the county such as the south Willard area, development also increased, which may lead to increased need for sewer and other types of critical infrastructure. Industrial growth is occurring in west Brigham City, Bear River City, and Corinne. West of Corinne is an existing Agricultural Industrial Park, and the new Proctor and Gamble facility is being built west of Bear River City, with sewer and water provided by Brigham City.

Cache County's largest employer is Utah State University, which employs approximately 6,493 people (BRAG LCOS, 2008). While the county's workforce has underemployment and low wage issues, the general economy has been stable, with over 1,900 jobs created in 2007 (Utah Department of Workforce Services, 2008). New employment was at a rate of 4%, and unemployment was at 2.5% during the same period.

Cache County's per capita personal income in 2005 was \$22,626. In 2000, 13.5% of the population was below the poverty line. The unemployment rate averaged only 2.3% during 2006 (BRAG CEDS, 2008).

New development in Cache County has increased dramatically in areas such as Nibley, Providence, North Logan, and Mendon. Logan has also grown substantially over the past few years, particularly on the west side of the city. Commercial growth has also been steady with new businesses near 1400 North in Logan, and a new Wal-Mart under construction on the south end of Logan City.

Rich County has recently discovered economic opportunities in the area of recreation and tourism regarding Bear Lake, a large freshwater lake on the Utah/Idaho border. However, incomes based on seasonal tourism in the region have not provided a stable economic situation for residents. Income in the winter months is difficult to attain when part-time residents leave the cold winters of the area. Of all the residences in Rich County, 70% of them are seasonally occupied (BRAG CEDS, 2008).

Mining and manufacturing tends to give higher wages in the county. Rich county wages increased by 8.5% between 2005 and 2006, and per capita personal income in Rich County for 2005 was \$25,487. About 10.2% of county residents were below the poverty line in 2000 (BRAG CEDS, 2008). Unemployment at the end of 2007 was at 2.6% (Utah Department of Workforce Services, 2008).

Residential development in Rich County has mainly been in the form of second homes and seasonal cabins. Garden City is the only municipality that has seen recent growth in the county. Several other large developments are being planned in the area, and could prove to increase Garden City's population as well as the counties.

### **Table 3-5: Box Elder County – Demographic and Economic Summary**

#### **Box Elder County**

#### **2005-2007 American Community Survey 3-Year Estimates - Data Profile Highlights:**

NOTE. Although the American Community Survey (ACS) produces population, demographic and housing unit estimates, it is the Census Bureau's Population Estimates Program that produces and disseminates the official estimates of the population for the nation, states, counties, cities and towns and estimates of housing units for states and counties.

<b>Social Characteristics -</b>	<b>Estimate</b>	<b>Percent</b>	<b>U.S.</b>	<b>Margin of Error</b>
Average <u>household</u> size	3.12	(X)	2.60	+/-0.07
Average family size	3.48	(X)	3.19	+/-0.11
Population 25 years and over	26,698			+/-167
High school graduate or higher	(X)	89.8	84.0%	(X)
Bachelor's degree or higher	(X)	20.3	27.0%	(X)
<u>Civilian veterans</u> (civilian population 18 years and over)	3,203	10.1	10.4%	+/-339
Disability status (population 5 years and over)	6,064	14.4	15.1%	+/-625
Foreign born	1,419	3.0	12.5%	+/-415
Male, Now married, except separated (population 15 years and over)	11,209	64.7	52.6%	+/-504

Female, Now married, except separated (population 15 years and over)	10,931	63.8	48.5%	+/-491
Speak a language other than English at home (population 5 years and over)	3,674	8.6	19.5%	+/-605
Household population	46,115			+/-91
Group quarters population	(X)	(X)	(X)	(X)
<b>Economic Characteristics -</b>	<b>Estimate</b>	<b>Percent</b>	<b>U.S.</b>	<b>Margin of Error</b>
In labor force (population 16 years and over)	22,632	67.3	64.7%	+/-608
Mean travel time to work in minutes (workers 16 years and over)	20.5	(X)	25.1	+/-1.1
Median household <u>income</u> (in 2007 inflation- adjusted dollars)	52,305	(X)	50,007	+/-2,330
Median family income (in 2007 inflation- adjusted dollars)	56,615	(X)	60,374	+/-2,521
Per capita income (in 2007 inflation-adjusted dollars)	19,415	(X)	26,178	+/-660
Families below poverty level	(X)	6.2	9.8%	(X)
Individuals below poverty level	(X)	7.1	13.3%	(X)
<b>Housing Characteristics -</b>	<b>Estimate</b>	<b>Percent</b>	<b>U.S.</b>	<b>Margin of Error</b>
Total housing units	16,319			+/-43
Occupied housing units	14,789	90.6	88.4%	+/-321
Owner-occupied housing units	11,762	79.5	67.3%	+/-395
Renter-occupied housing units	3,027	20.5	32.7%	+/-441
Vacant housing units	1,530	9.4	11.6%	+/-323
Owner-occupied homes	11,762			+/-395
Median value (dollars)	139,800	(X)	181,800	+/-2,139
Median of selected monthly owner costs				
With a <u>mortgage</u> (dollars)	1,132	(X)	1,427	+/-26
Not mortgaged (dollars)	288	(X)	402	+/-10
<b>ACS Demographic Estimates -</b>	<b>Estimate</b>	<b>Percent</b>	<b>U.S.</b>	<b>Margin of Error</b>
Total population	46,835			*****
Male	23,806	50.8	49.2%	+/-211
Female	23,029	49.2	50.8%	+/-211
<u>Median age</u> (years)	29.4	(X)	36.4	+/-0.3
Under 5 years	4,118	8.8	6.9%	+/-85
18 years and over	31,806	67.9	75.3%	+/-56
65 years and over	5,033	10.7	12.5%	+/-86
<u>One race</u>	46,089	98.4	97.9%	+/-245
White	43,227	92.3	74.1%	+/-345
Black or African American	141	0.3	12.4%	+/-21
American Indian and Alaska Native	350	0.7	0.8%	+/-123
Asian	573	1.2	4.3%	+/-117
Native Hawaiian and Other Pacific Islander	0	0.0	0.1%	+/-151
Some other race	1,798	3.8	6.2%	+/-359
Two or more races	746	1.6	2.1%	+/-245
Hispanic or Latino (of any race)	3,378	7.2	14.7%	*****

Source: U.S. Census Bureau, 2005-2007 American Community Survey

Explanation of Symbols:

'\*\*\*' - The median falls in the lowest interval or upper interval of an open-ended distribution. A statistical test is not appropriate.

\*\*\*\*\* - The estimate is controlled. A statistical test for sampling variability is not appropriate.  
 'N' - Data for this geographic area cannot be displayed because the number of sample cases is too small.  
 '(X)' - The value is not applicable or not available.

### Table 3-6: Cache County – Demographic and Economic Summary

#### Cache County 2005-2007 American Community Survey 3-Year Estimates - Data Profile Highlights:

NOTE. Although the American Community Survey (ACS) produces population, demographic and housing unit estimates, it is the Census Bureau's Population Estimates Program that produces and disseminates the official estimates of the population for the nation, states, counties, cities and towns and estimates of housing units for states and counties.

	Estimate	Percent	U.S.	Margin of Error
<b>Social Characteristics -</b>				
Average <u>household</u> size	3.33	(X)	2.60	+/-0.05
Average family size	3.68	(X)	3.19	+/-0.07
Population 25 years and over	52,416			+/-348
High school graduate or higher	(X)	92.0	84.0%	(X)
Bachelor's degree or higher	(X)	34.7	27.0%	(X)
<u>Civilian veterans</u> (civilian population 18 years and over)	4,471	6.1	10.4%	+/-404
Disability status (population 5 years and over)	9,348	9.8	15.1%	+/-761
Foreign born	7,286	6.8	12.5%	+/-529
Male, Now married, except separated (population 15 years and over)	21,959	57.1	52.6%	+/-774
Female, Now married, except separated (population 15 years and over)	21,881	55.2	48.5%	+/-788
Speak a language other than English at home (population 5 years and over)	13,690	14.4	19.5%	+/-976
Household population	104,490			+/-156
Group quarters population	(X)	(X)	(X)	(X)
<b>Economic Characteristics -</b>				
In labor force (population 16 years and over)	55,463	72.2	64.7%	+/-1,011
Mean travel time to work in minutes (workers 16 years and over)	16.3	(X)	25.1	+/-0.8
Median household <u>income</u> (in 2007 inflation-adjusted dollars)	45,029	(X)	50,007	+/-2,237
Median family income (in 2007 inflation-adjusted dollars)	53,682	(X)	60,374	+/-2,357
Per capita income (in 2007 inflation-adjusted dollars)	18,202	(X)	26,178	+/-694
Families below poverty level	(X)	9.4	9.8%	(X)
Individuals below poverty level	(X)	14.6	13.3%	(X)
<b>Housing Characteristics -</b>				
Total housing units	33,806			+/-70
Occupied housing units	31,340	92.7	88.4%	+/-491
Owner-occupied housing units	20,874	66.6	67.3%	+/-521
Renter-occupied housing units	10,466	33.4	32.7%	+/-640
Vacant housing units	2,466	7.3	11.6%	+/-490
Owner-occupied homes	20,874			+/-521

Median value (dollars)	159,300	(X)	181,800	+/-3,555
Median of selected monthly owner costs				
With a <u>mortgage</u> (dollars)	1,150	(X)	1,427	+/-28
Not mortgaged (dollars)	312	(X)	402	+/-12

ACS Demographic Estimates -	Estimate	Percent	U.S.	Margin of Error
Total population	106,688			*****
Male	52,930	49.6	49.2%	+/-245
Female	53,758	50.4	50.8%	+/-245
<u>Median age</u> (years)	24.7	(X)	36.4	+/-0.2
Under 5 years	11,505	10.8	6.9%	+/-121
18 years and over	73,545	68.9	75.3%	*****
65 years and over	7,861	7.4	12.5%	+/-108
<u>One race</u>	105,025	98.4	97.9%	+/-393
White	97,861	91.7	74.1%	+/-863
Black or African American	733	0.7	12.4%	+/-168
American Indian and Alaska Native	595	0.6	0.8%	+/-172
Asian	2,278	2.1	4.3%	+/-159
Native Hawaiian and Other Pacific Islander	128	0.1	0.1%	+/-83
Some other race	3,430	3.2	6.2%	+/-802
Two or more races	1,663	1.6	2.1%	+/-393
Hispanic or Latino (of any race)	8,818	8.3	14.7%	*****

Source: U.S. Census Bureau, 2005-2007 American Community Survey

Explanation of Symbols:

'\*\*\*' - The median falls in the lowest interval or upper interval of an open-ended distribution. A statistical test is not appropriate.

'\*\*\*\*\*' - The estimate is controlled. A statistical test for sampling variability is not appropriate.

'N' - Data for this geographic area cannot be displayed because the number of sample cases is too small.

'(X)' - The value is not applicable or not available.

### Table 3-7: Rich County – Demographic and Economic Summary

#### Rich County

#### Census 2000 Demographic Profile Highlights:

General Characteristics -	Number	Percent	U.S.
Total population	1,961		
Male	998	50.9	49.1%
Female	963	49.1	50.9%
<u>Median age</u> (years)	34.3	(X)	35.3
Under 5 years	142	7.2	6.8%
18 years and over	1,282	65.4	74.3%
65 years and over	277	14.1	12.4%
<u>One race</u>	1,952	99.5	97.6%
White	1,925	98.2	75.1%
Black or African American	0	0.0	12.3%
American Indian and Alaska Native	1	0.1	0.9%
Asian	8	0.4	3.6%
Native Hawaiian and Other Pacific Islander	0	0.0	0.1%
Some other race	18	0.9	5.5%
Two or more races	9	0.5	2.4%
Hispanic or Latino (of any race)	36	1.8	12.5%

Household population	1,943	99.1	97.2%
Group quarters population	18	0.9	2.8%
Average <u>household</u> size	3.01	(X)	2.59
Average family size	3.44	(X)	3.14
Total housing units	2,408		
Occupied housing units	645	26.8	91.0%
Owner-occupied housing units	541	83.9	66.2%
Renter-occupied housing units	104	16.1	33.8%
Vacant housing units	1,763	73.2	9.0%
<b>Social Characteristics -</b>	<b>Number</b>	<b>Percent</b>	<b>U.S.</b>
Population 25 years and over	1,144		
High school graduate or higher	1,047	91.5	80.4%
Bachelor's degree or higher	252	22.0	24.4%
<u>Civilian veterans</u> (civilian population 18 years and over)	140	10.9	12.7%
Disability status (population 5 years and over)	248	13.8	19.3%
Foreign born	38	1.9	11.1%
Male, Now married, except separated (population 15 years and over)	513	70.3	56.7%
Female, Now married, except separated (population 15 years and over)	482	69.1	52.1%
Speak a language other than English at home (population 5 years and over)	60	3.3	17.9%
<b>Economic Characteristics -</b>	<b>Number</b>	<b>Percent</b>	<b>U.S.</b>
In labor force (population 16 years and over)	839	61.4	63.9%
Mean travel time to work in minutes (workers 16 years and over)	29.0	(X)	25.5
Median household <u>income</u> in 1999 (dollars)	39,766	(X)	41,994
Median family income in 1999 (dollars)	44,783	(X)	50,046
Per capita income in 1999 (dollars)	16,267	(X)	21,587
Families below poverty level	34	6.5	9.2%
Individuals below poverty level	198	10.2	12.4%
<b>Housing Characteristics -</b>	<b>Number</b>	<b>Percent</b>	<b>U.S.</b>
Single-family owner-occupied homes	398		
Median value (dollars)	84,300	(X)	119,600
Median of selected monthly owner costs	(X)	(X)	
With a <u>mortgage</u> (dollars)	756	(X)	1,088
Not mortgaged (dollars)	195	(X)	295

(X) Not applicable.

Source: U.S. Census Bureau, Summary File 1 (SF 1) and Summary File 3 (SF 3)

## CLIMATE

Elevations in the region vary from 4,200 to 9,979 feet, which is the elevation of the region's highest peak, Naomi Peak in Cache County. Annual precipitation ranges from 9 inches to over 40 inches. The high mountain valleys experience long cold winters and short cool summers. The Bear River Region experiences everything from rainstorms, snow, sleet, hail, high winds, and cold temperatures, to hot summer days and drought. During winter months, valley's experience fog and colder temperatures in low elevations and regular winds and increasing

snowpack at higher elevations. During the summer months, temperatures can remain above 100° F for weeks, and drought can be problematic for farmers and ranchers.

Rich County has some of the most severe winters in the state. An early settler, J. Golden Kimball, described the climate as “nine months of winter and three months of late fall.” Woodruff is one of the coldest towns in the state, with their lowest yearly temperature of -50° F.

## **GEOLOGY**

The region is home to the Wellsville Mountain Range and the Bear River Range. Notable physiographic features of the region include: the Crawford Mountain, Bear Lake Plateau, Goose Creek/Raft River Mountains, Curlew Valley, Hansel Mountains-Blue Springs Hills, Great Salt Lake Desert, Lakeside Section and the Clarkston Mountain/Junction Hills (Stokes, 1988).

The Wellsville Range is east of Brigham City and is known for its long, upward-faulted ridge of Precambrian metamorphic rocks covered by Paleozoic aged sedimentary rocks.

The Paleozoic section of the rock sequence is quite consistent throughout this area with sandstone on bottom, shale, and finally limestone or dolomite. Most of the rocks are of marine or near shore deposits from the ancient Lake Bonneville. The Wasatch Fault is evident in the western edge of the Wellsville Mountain Range with the eastern portion lifted thousands of feet than the western edge. The Eastern portion is comprised of mainly Pennsylvanian and Permian aged rocks. Cache Valley is a dropped portion between the East Cache Fault and the Bear River Range. The Cache Valley was once an arm of Lake Bonneville. Logan Canyon is made up of Paleozoic and Tertiary rocks with the same sequence as mentioned above. The Bear River Range is situated on the east of the western extent of the Middle Rocky Mountain Physiographic Province. The Overthrust Belt Geologic Province is what uplifted these mountains about 50 million years ago. The Intermountain Seismic Belt is a result of the Overthrust Belt. “The Intermountain Seismic Belt forms a boundary between the Basin and Range and the Middle Rocky Mountain Physiographic provinces” (Mabey, 1999). The older Paleozoic and Mesozoic rocks are visible above the younger Tertiary and Quaternary aged sedimentary rocks because of the many visible faults in this zone. One can see these geological formations from the Bear River Range to the east are part of the Great Basin Physiographic province, which consists of mainly Quaternary age surface deposits such as alluvium, terrace deposits, sand dunes, and lakebed sediments.

Rich County is home to portions of both the Bear Lake and Bear River Valleys. Bear Lake Valley is considered to be an east tilted half graben, with faults on either side of the valley (Covington, 2008).

The soil morphology in this region is characterized by deep to very deep well drained soils. Down cutting from the Bear River and its tributaries have resulted in massive erosion. Soils on old lake bottoms in the middle of Cache and Salt Lake valleys are nearly level, moderately well to poorly drained, very deep, and derived from lacustrine and alluvial deposits (Department of Landscape Architecture and Environmental Planning USU, 2001).

## NATIONAL FLOOD INSURANCE PROGRAM PARTICIPATION

The National Flood Insurance Program was created in 1968 by the Federal Emergency Management Agency (FEMA) to provide homeowners living in the 100-year floodplain an opportunity to purchase flood insurance for their home. In order for individuals to be eligible to purchase flood insurance, their community needs to be a member of the National Flood Insurance Program (NFIP). It is fairly simple to join the NFIP with help from the State Floodplain Manager. There is also limited funding for flood mitigation projects for communities that are members of the NFIP.

<b>Table 3-8: National Flood Insurance Program (NFIP) Participation</b>						
	<b>Community Name</b>	<b>CID</b>	<b>Date of Entry</b>	<b>Current Effective Map</b>	<b>Existing Raster Data</b>	<b>Map Digitized for GIS**</b>
<b>Box Elder County</b>	Box Elder County *	490005#	09/01/87 (R)	09/01/87 (L)	Y	Y
	Brigham City, City of	490006#	08/17/81 (R)	08/17/81	Y	Y
	Corinne, City of	490197#	07/15/80 (R)	07/15/80 (M)	Online FIRM	Y
	Honeyville, City of	490008#	07/29/80 (R)	07/29/80 (M)	Y	Y
	Mantua, Town of	490009#	07/08/80 (R)	07/08/80 (M)	Y	Y
	Perry City, City of	490010#	05/20/80 (R)	05/20/80 (M)	Y	Y
	Willard, City of	490011	07/01/87 (R)	07/01/87 (L)	Online FIRM	Y
<b>Cache County</b>	Cache County*	490012#	02/01/87 (R)	02/01/87 (L)	Y	Y
	Clarkston, Town of	490014#	08/19/80 (R)	08/19/80 (M)	Y	Y
	Hyde Park, Town of	490016#	07/29/80 (R)	07/29/80 (M)	Y	Y
	Hyrum, City of	490017#	04/08/80 (R)	04/08/80 (M)	Y	Y
	Lewiston, City of	490018#	07/29/80 (R)	07/29/80 (M)	Y	Y
	Logan, City of	490019#	09/28/84 (R)	09/28/84	Y	Y
	Mendon, City of	490020 #	07/22/80 (R)	07/22/80 (M)	Y	Y
	Millville, Town of	490021	03/13/85 (E)	10/22/76	Online FIRM	Y
	Newton, Town of	490022#	07/22/80 (R)	07/22/80 (M)	Y	Y
	Nibley, Town of	490023	08/05/86 (R)	08/05/86 (M)	Online FIRM	Y
	North Logan, City of	490024#	03/18/86 (R)	03/18/86 (M)	Y	Y
	Providence, City of	490226	02/02/84 (R)	(NSFHA)	N	N
	Richmond, City of	490027#	08/12/80 (R)	08/12/80 (M)	Y	Y
	Smithfield, City of	490029#	03/18/86 (R)	03/18/86 (M)	Y	Y
Wellsville, City of	490031#	07/29/80 (R)	07/29/80 (M)	Y	Y	
<b>Rich County</b>	Laketown, Town of	490099	07/15/85 (R)	(NSFHA)	N	N
	Woodruff, Town of	490101#	07/22/80 (R)	07/22/80 (M)	Online FIRM	Y

Source: Federal Emergency Management Agency (FEMA) National Flood Insurance Program, 2008

\* Unincorporated areas only

\*\* (GIS) Geographic Information Systems (Mapping and geographic analysis software)

(E) Emergency Program or (R) Regular Program

(NSFHA) No Special Flood Hazard Area - all Zone C

Note: Amalga does not participate in NFIP, but does have maps digitized in GIS format. Paradise also does not participate in NFIP, but does have an online Flood Insurance Rate Map.

## BUILDING CODE EFFECTIVENESS GRADING REPORTS (BCEGS)

The Building Code Effectiveness Grading Report was implemented in 1995 to evaluate current building codes in a particular community and to determine how well the community enforces its building codes. This program assigns each municipality a grade of one to ten, with one showing excellent commitment to building code enforcement. The concept of the Building Code Effectiveness Grading Reports is that communities with effective, well-enforced building codes should sustain less damage in the event of a natural disaster, and insurance rates can be adjusted accordingly. More information on what determines a community's score can be found at:

<http://www.isomitigation.com/bcegs/0000/bcegs0003.html>.

<b>Table 3-9: BCEGS Scores for the Bear River Region</b>		
<b>Jurisdiction Name</b>	<b>Score</b>	<b>Date</b>
Box Elder County	RES 04 COM 04	2001
Brigham City	RES 03 COM 03	2001
Tremonton	RES 05 COM 05	2000
Willard	RES 05 COM 05	1998
Cache County	RES 03 COM 03	2001
Hyde Park	RES 03 COM 03	2001
Logan City	RES 03 COM 03	1999
North Logan	RES 03 COM 03	1999
Smithfield	RES 04 COM 04	2000
Garden City	RES 99 COM 07	1998

Source: ISO (Insurance Services Office), 2008.

99 is used for jurisdictions which are either unclassified or do not meet the minimum criteria of the BCEGS program. This would include departments which do not do plan review, inspections, have legally adopted codes or have declined to participate in the ISO program.